

Retail Partnership Liquidation

*1410 & 1434 East Lake Mead Parkway
Henderson, Nevada 89011*



+/-11,479 Square Feet two story building



+/-7,205 Square Feet two story building

Bruce Familian
(702) 592-7089 Cell
bruce@familian.org

Familian Realty Group, Inc.
5520 Stephanie Street
Las Vegas, Nevada 89122
(702) 227-9267 Office
(702) 227-9273 Fax
www.familian.org

A long, single-story commercial building with a light-colored facade and a brown roofline. The building features several large arched windows and doorways. A prominent sign on the upper part of the facade reads "SPACE AVAILABLE". The building is situated in a parking lot under a clear blue sky. A red fire hydrant is visible near the right side of the building, and a small tree is planted in front of it. The overall scene is bright and clear, suggesting a sunny day.

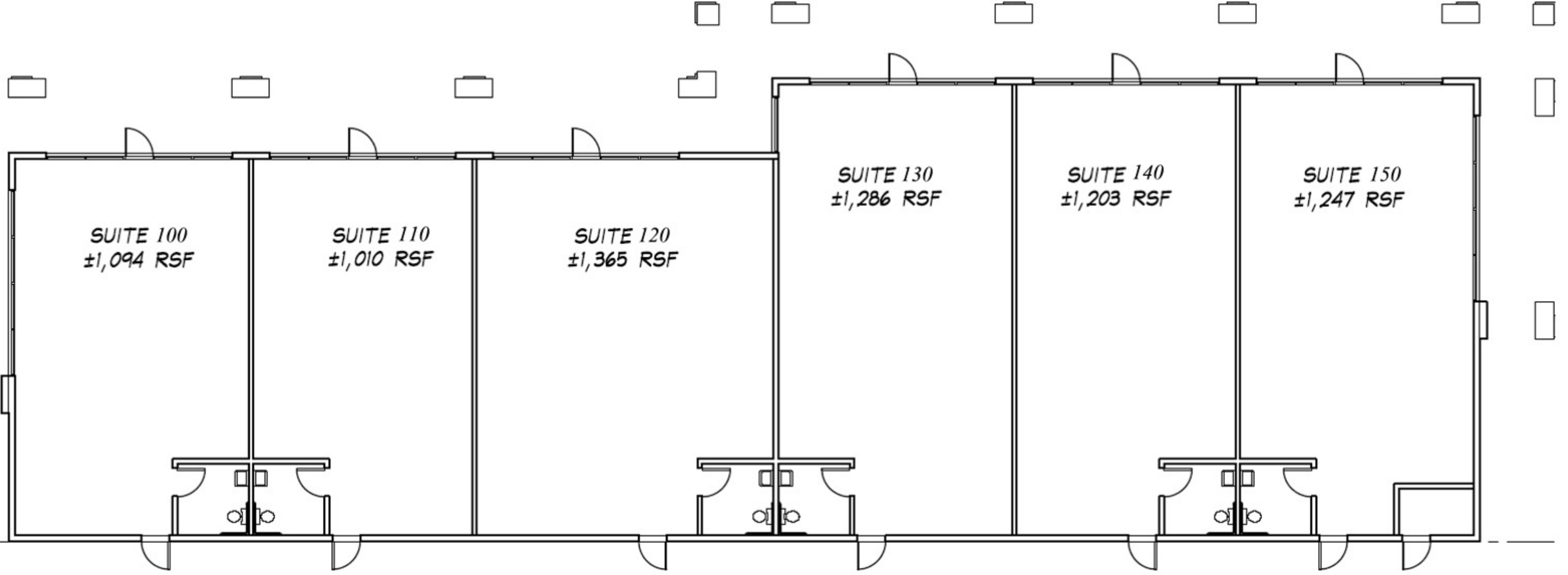
SPACE AVAILABLE



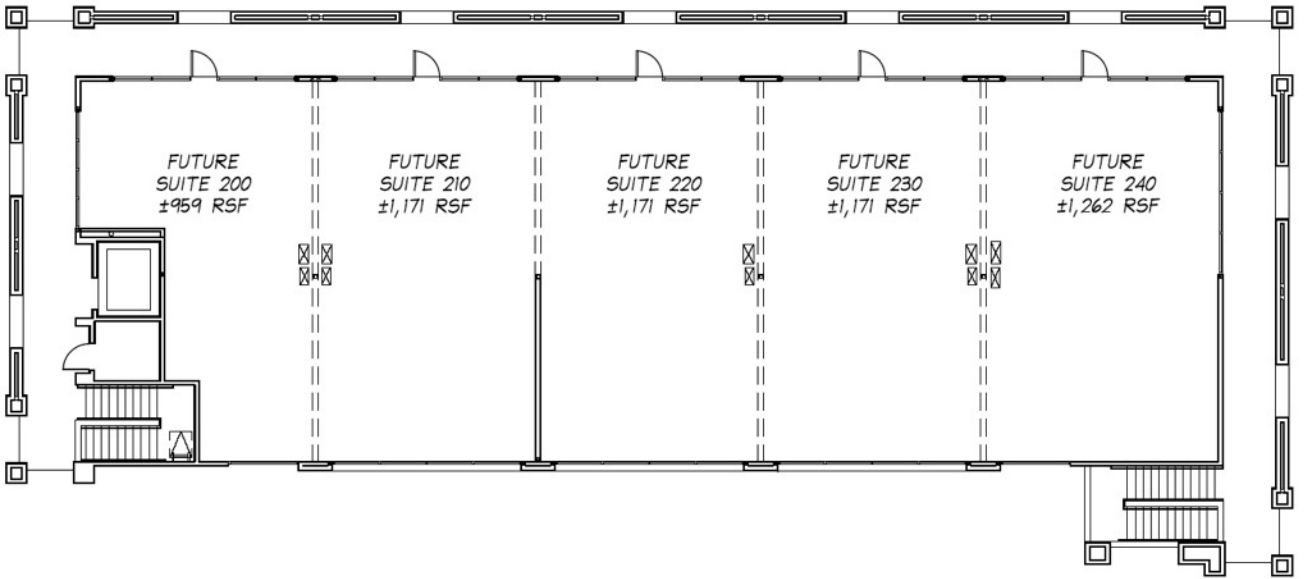
240

140

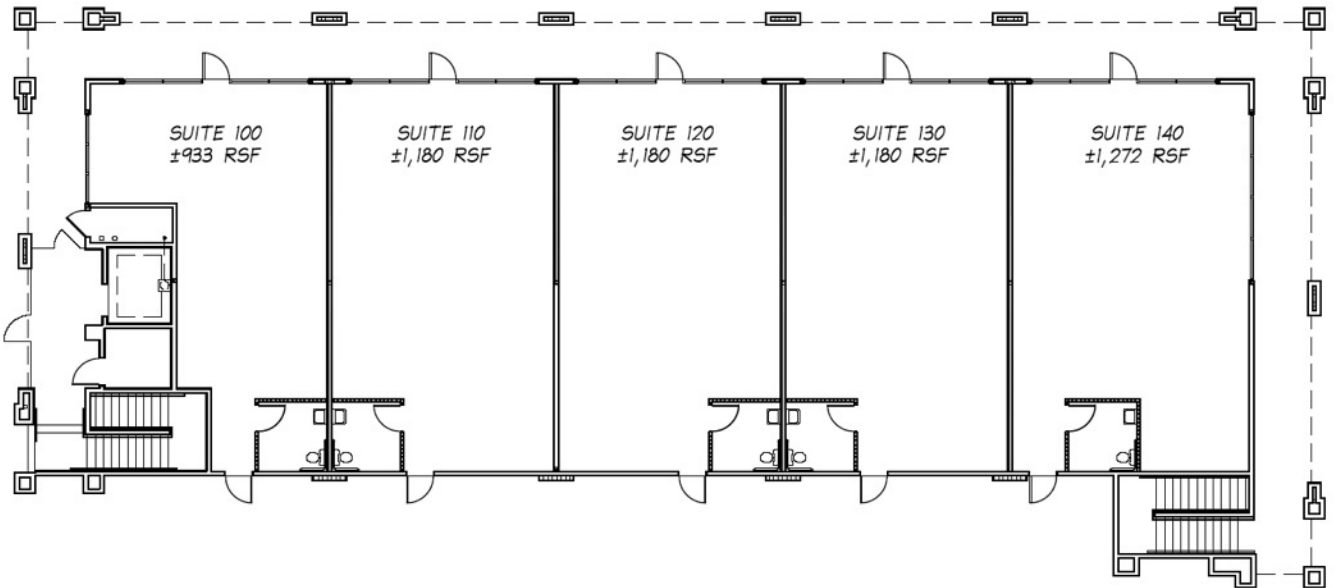
NO PARKING FIRE LANE



1410 E. Lake Mead Parkway
Henderson, Nevada



Second Floor



First Floor

1434 E. Lake Mead Parkway
Henderson, Nevada



Keokuck St

CALISO RIDGE PLAZA

CALISO RIDGE PLAZA

CALISO RIDGE PLAZA

Duncan Way

De Marco Dr

Available Land
Not a Part

Retail Properties

Calville Estates Ct

Lake Mead Estates Way

LAKE MEAD
CORAMING
RESIDENTIAL AND